

TYPE 1 HINGED COVER BOXES

Austin hinge cover boxes are Underwriters Laboratories Listed for Cabinet and Cutout box applications. All hinge cover boxes meet the general-purpose indoor requirements.

Construction:

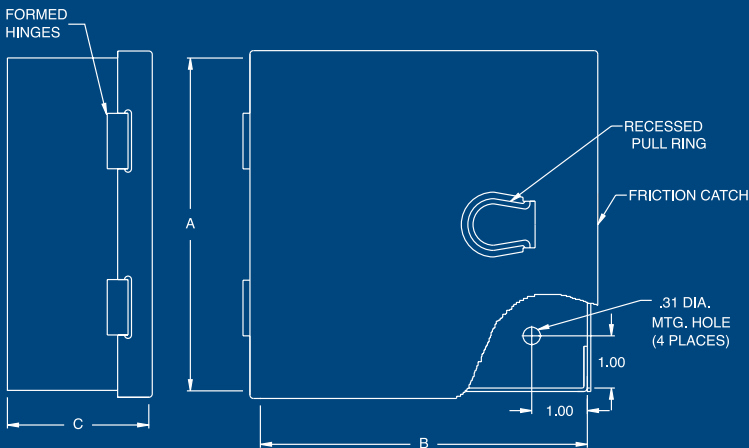
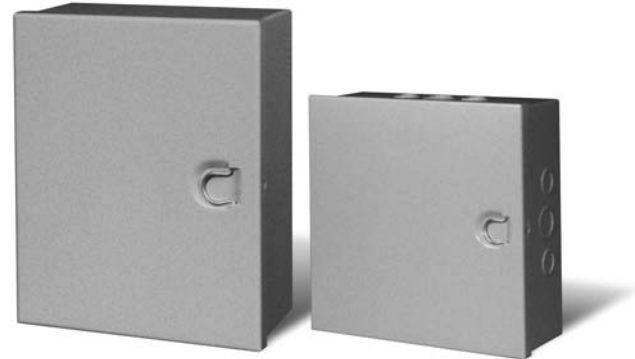
- Fabricated in accordance with UL specifications from code gauge steel.
- Hinge cover boxes with a maximum dimension of 18" are fabricated with formed hinges and a pull ring catch.
- Boxes are furnished with or without knockouts. If knockouts are requested, a combination of 1/2" - 3/4" and 3/4" - 1" standard conduit sizes are furnished.
- Back of boxes have mounting holes.

Finish:

Austin hinge cover boxes are constructed standard in galvanized steel. An ANSI 61 gray polyester powder coating is available on request.

Options:

- Special knockouts or knockout arrangements.
- Special materials.
- Special finishes.
- Custom box size or construction.



**INDUSTRY
STANDARDS**

UL 50 Type 1
NEMA Type 1
CUL Type 1

Austin Electrical Enclosures
Post Office Box 2320
Yadkinville, NC 27055

Phone: 336.468.2851
800.288.2851

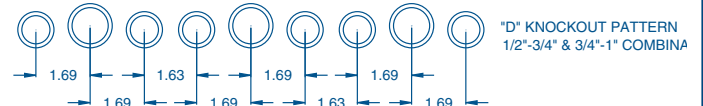
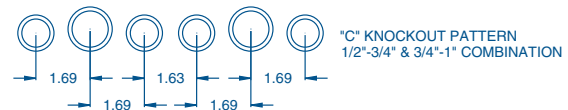
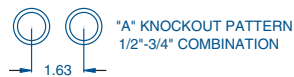
HINGE COVER BOXES

Catalog Number	Bundle Qty.	Bundle Weight	Enclosure Size (AxBxC)	KO Pattern "A" Side	KO Pattern "B" Side
AB-644HC	5	10	6x4x4	B	B
AB-664HC	5	15	6x6x4	B	B
AB-864HC	5	20	8x6x4	B	B
AB-1064HC	5	22.5	10x6x4	B	B
AB-1264HC	5	25	12x6x4	C	B
AB-884HC	5	25	8x8x4	B	B
AB-1084HC	5	25	10x8x4	B	B
AB-1284HC	5	32.5	12x8x4	C	B
AB-10104HC	5	35	10x10x4	B	B
AB-12104HC	5	40	12x10x4	C	B
AB-12124HC	5	45	12x12x4	C	C
AB-15124HC	1	11	15x12x4	C	C
AB-18124HC	1	13	18x12x4	D	C
AB-15154HC	1	14	15X15X4	C	C
AB-18154HC	1	16	18X15X4	D	C
AB-18184HC	1	17	18x18x4	D	D
AB-666HC	5	20	6x6x6	A	A
AB-866HC	5	25	8x6x6	B	B
AB-886HC	5	30	8x8x6	B	B
AB-1086HC	5	35	10x8x6	B	B
AB-1286HC	5	40	12x8x6	C	B
AB-10106HC	5	45	10x10x6	B	B
AB-12106HC	5	45	12x10x6	C	B
AB-12126HC	5	55	12x12x6	C	C
AB-15126HC	1	13	15x12x6	C	C
AB-18126HC	1	15	18x12x6	D	C
AB-15156HC	1	16	15X15X6	C	C
AB-18156HC	1	17	18X15X6	D	C
AB-18186HC	1	20	18x18x6	D	D

NOTE:

Replace "HC" Suffix with: HCK: Hinge Cover w/KO's
 HCGK: Hinge Cover Gray w/KO's
 HCG: Hinge Cover Gray

POSSIBLE KNOCKOUT PATTERNS



NOTE: REFER TO BOX TABLE FOR APPLICABLE KNOCKOUT PATTERN